

EXPOSED ROLLER DOOR INSTALLATION INSTRUCTIONS

crest
showers



EXPOSED ROLLER DOOR INSTALLATION INSTRUCTIONS

IMPORTANT INFORMATION:

Please read all instructions and warranty information before beginning installation. It is assumed that this installation is being carried out by qualified trades-people.

GENERAL SHOWER INFORMATION

- Due to weight of panels, 2 people may be needed to install shower.
- Walls must be plumb to a 2-3mm tolerance where shower is to be installed.
- Floor must be square to wall.

GLASS SAFETY

- Keep glass standing upright.
- Always sit glass on a padded surface i.e. polystyrene.
- Take extra precautions with edges of glass panels.
- If toughened safety glass hits a hard surface or is hit by a hard object, it may shatter or compromise the integrity of the glass.
- It is recommended that safety gloves and glasses are worn during installation.

INCLUDED

Glass Panels
Channel Extrusion Kits
Installation Kit
Silicone and Adhesive
Hardware

NEEDED

Caulking Gun
Level
Drill
Screw Driver
Spray Bottle with Soapy Water
Paper Towels
Tape Measure
Hack Saw or Drop Saw

IMPORTANT: PLEASE MEASURE WALL CHANNELS

For hinged door showers, wall channels will measure 1940mm standard. For custom panels, your wall channels will measure 10mm less than your glass height.

GLAZING CHANNELS

1. TILING

Ensure tiling is done before the channels are installed.

2. INSTALLING GLAZING CHANNELS

- Use a 2 meter level to check walls are within 2-3mm of plumb.
- Using measurements on dimension sheet, mark out channel positions on base. Set out floor channels and check shower entry space dimensions are correct.
- Clean tiled floor and underside of channel with a dry rag.
- Place floor channel in position and press downwards. Remove plastic from stabilizer blocks and stick to base either side of channel to keep in place (FIG 1).
- Slide wall channel on top of floor channel, making sure they butt up to each other and insert channel connector inside 'wall to floor' joint to help line up the wall channel (FIG 2).
- When plumb, drill 2 holes (3.5mm Dia.) in wall channel, lining up with framing locations. (FIG 3). The top hole should be within 100mm of top of channel and the second hole within 1000mm of top of channel. No screws will be required lower than 1200mm up from bottom of base.
- Remove dust from holes and from inside floor channel.
- Clean underside of wall and floor channels with a dry rag before running a thick bead (be very liberal to allow overflow and proper adhesion) of silicone in a continuous line down the entire length of the back of the channel (FIG 4) and place into position. Pop out channel connector and apply silicon into the floor to wall junction, popping the channel connector back in once done.
- Inject silicone into and around screw holes. Ensure wall channel is plumb, then screw in place.



FIG.1



FIG.2

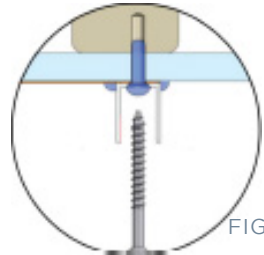


FIG.3

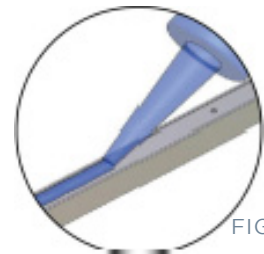


FIG.4

IMPORTANT

As an added waterproofing precaution, you can apply a continuous bead of silicon down the whole length of wall channel either on the interior or exterior of the wall channel as at your discretion.

GLASS PANELS corner sliding door

IMPORTANT: We highly recommend dry fitting fixed panels prior to installation to ensure exact measurements of required sliding door gap is achieved as pictured in supplied dimension sheet. Ensure all fixed panels are plumb and level. Use setting blocks as required to achieve this.

3. INSTALLING PANELS

- Place a spirit level on top of the floor channel and insert packers under it to achieve a suitable level. Take note of the packers used as this will be needed for the next steps
- Clean inside of channel with a dry rag and insert an 8mm packer. Insert an 8mm packer in the wall/floor corner of the channel and add/remove packers, as determined above, at the other end of the panel.

IMPORTANT NOTE: Panel one should protrude the floor channel by 30mm to allow for the sliding door guide. No other panels should protrude.

- Repeat for remaining panels (2-3 blocks per panel)
- Ensure that the tops of the panels are all level and in line with each other. You may need to fine tune the packers to achieve this.
- When panels are correctly aligned, remove panel 1 (FIG5) and run a thick continuous line of silicone down the inside of the wall channel (FIG 6) and apply liberally in the wall to floor channel join and along the floor channel to the length of the glass panel.
- Install sliding door guide at the same time as panel 1
- From outside the shower, slide glass panel into position (FIG7) and use small wedges (FIG 8) or a flat plastering blade to slide glass panel back to inside edge of channel and against silicone.
- Ensure panel is still level and plumb.

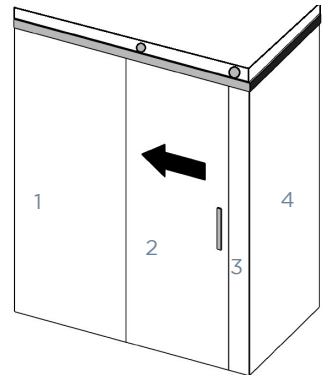


FIG.5

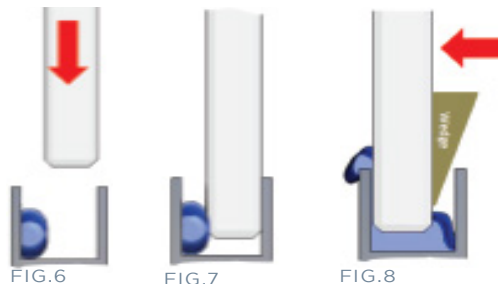


FIG.6

FIG.7

FIG.8

GLASS PANELS corner sliding door

4. FINISHING GLAZING CHANNEL TO GLASS PANEL JOIN

Starting at the top of the wall channel, from outside shower, spray with warm soapy water then insert rubber wedge seal into gap (removing plastic wedges if used)(FIG 9). Leave rubber wedge protruding 40mm at top to cut off later.

IMPORTANT: Rubber wedge must be pressed into channel lightly from top to bottom before pushing right in. This method ensures rubber wedge does not get stretched and then shrink later.

- Repeat steps 3 and 4 with applicable panels.

FOR GLASS TO GLASS JOINS:

- Dry fit the panel, using the same packer as the panel you are joining to.
- Check that door gap is the same at top and bottom of panels
- Run a continuous bead of silicon down entire length of 10mm face of installed wall to glass panel and across floor channel to the width of the glass to glass panel(- FIG 10).
- Gently place glass to glass panel into siliconed floorchannel and tilt gently upwards until it joins to glass to wall panel (FIG 11). Ensure there is no side to side movement while placing panel as this will smear silicone.
- Hold glass to glass join in place with insulation/gaffa tape (FIG 12).
- Allow silicone to cure for 48hours before installing top rail.
- Cut off excess rubber wedge.
- Spray channels and glass with slightly soapy water then use spatula provided to clean off excess silicone (FIG 13).
- Repeat this process 3 times. Use minimal water then wipe off with paper towels. Tough Wipes or Baby Wipes are also good to use for this.

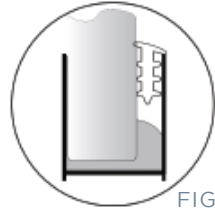


FIG.9



FIG.10

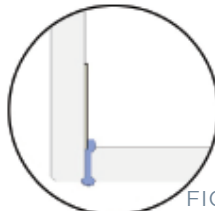


FIG.11

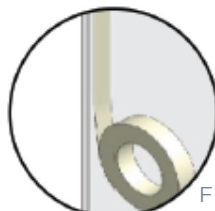


FIG.12

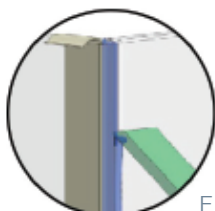
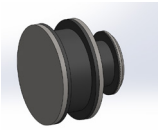


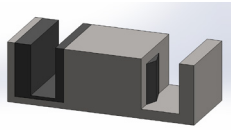
FIG.13

SLIDING DOOR TRACK

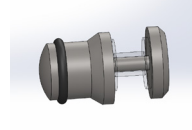
The roller component will be supplied as a bar and SKE kit. SKE kit below:



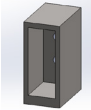
ROLLER ASSEMBLY X 2



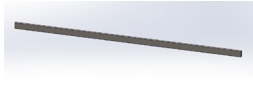
FLOOR GUIDE



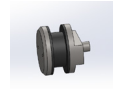
JUMP STOPS X 2



WALL MOUNT
BRACKET X 2



SLIDING RAIL



GLASS TO BAR
CONNECTOR X 2

Additional install parts:

- Roller tightener
- Allen keys
- Door stop x 2

5. FITTING THE DOOR RAIL

- With the return panel installed, hold the door rail (40mm x 15mm) up to the panel and ensure the holes on the glass align with the bar.
- Check the dimension sheet to see whether the door stop or * glass to bar connector* is required first.
- Place the rail on the floor, slide the door stops (itemxx) into position and tighten the grub screws.Ensure the rubber buffers face the edge of the door panel.
- Disassemble the glass to rail connector (item xx) and slide the square threaded base up inside the rail to align with the hole closest to each end. When aligned, screw the connector into the threaded base and tighten.
- Photo (below) shows Glass to bar connector (with cover removed) to the left and door stop to the right.
- Slide the wall mount bracket onto each end of the rail and lightly tighten the grub screws.
- Lift the rail into place and align the glass to bar connectors with return panel holes. Fit the covers and lightly tighten using using the adjustable pin wrench.



FIG.14



FIG.15

****Helpful tip: Add masking tape to face of the covers to protect them from getting scratched if you slip.**

SLIDING DOOR TRACK

- Check that rail is level. If so, proceed to tighten the covers. If not, leave the covers loosely fastened, prop against the wall, adjust then tighten. See images below.



FIG.16



FIG.17

- Once the door rail has been secured to the glass, and is level, the wall anchor blocks can be fixed into position on the wall. Mark the wall around wall mount using either a pencil or masking tape.(FIG 18.)
- Loosen the covers and remove the bar. Remove wall mount from rail.
- Position the wall mount bracket accurately inside the marking on the wall and use a pencil to mark out drill holes (FIG 18.)
- Proceed to drill the markings made. (FIG 19.)
(talk to installers about recommend drill bits)
- Plug holes and fill with silicone in order to ensure watertight seal. (IFIG 20.)
- Screw the mount into place (FIG21.)



FIG.18

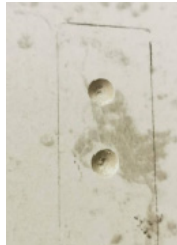


FIG.19



FIG.20

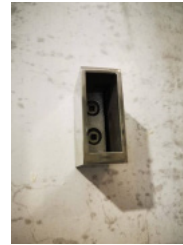


FIG.21

SLIDING DOOR TRACK

- Insert the rail into the wall mount (FIG 21.) and tighten the cover closest to the wall. Again, use masking tape on covers to prevent scratches.
- Check the rail is level then then tighten the grub screws on the wall mount. The screws are located on the underside of the wall mount.
- Check the level and tighten the final cover. They are tightened in this order to allow for any adjustments, if needed, to ensure rail is level.
- Remove one of the gaskets from each sliding door wheel (there are two in total in each wheel but only one is required) and screw the wheels through the holes on door.
- Lift the door and ensure the wheels are located on top of the bar. Place the bottom of the door inside the floor level door guide.
- Install handle and adjust door stops (undo grub, move, tighten) based on handle position when the door is open and closed.
- Secure the jump stops through holes in glass door. These prevent the door from jumping off the rail. Once tightened keep rotating clock wise until it sits closer to the bar.

6. FITTING THE DOOR HANDLE

- Remove the handle from the wrapper, dismantle and re-assemble onto either side of the door. Take care to ensure the plastic bushes are located inside the locator holes and the locking hex screws are tightened so the handle is tight and secure.

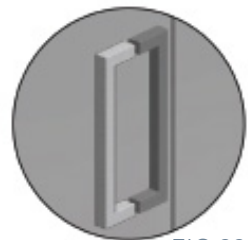


FIG.22

SHELVES

7, INSTALLING SHELVES

Crest Showers Floating Glass Shower Shelf can be installed in any corner of a glass or tile wall. If two shelves are installed in the same corner, ideal shelf heights off the floor are 1200 & 1600mm. When installed in different corners, an ideal height is 1400mm off the floor.

When installing onto Seratone, Hardiglaze or Sim, apply insulation/gaffa tape to the liner then adhere the stabiliser block on top of the tape. This makes the blocks easier to remove and protects the wall board surface.

We DO NOT recommend installing these on FLAT acrylic liners, due to adhesion difficulties. They are however, compatible with CREST moulded liners. If you do wish to use on an acrylic surface, ensure the acrylic liner where you are mounting the shelf is roughened with sandpaper and extra time is taken before shelf is used.

IMPORTANT: Protect the shower floor until adhesive has fully cured in case of the unlikely event that shelf/shower is disturbed and the shelf falls.

- Clean area shelf is being adhered, to ensuring it is free of any dust, soap scum, cleaners or any other substance.
- Remove plastic backing from stabiliser blocks and press firmly onto wall (FIG 27).
- Place the shelf in position to confirm that it is level. If required, adjust the stabiliser blocks to suit. Optional -apply insulation/gaffa tape to shelf/wall to prevent bleeding of the adhesive onto the wall or shelf.(FIG 28).
- Remove shelf and put a thin bead of adhesive down both edges of shelf (FIG 29).
- Carefully place shelf on stabiliser blocks and gently push into corner. Check the level and add additional blocks to top of shelf to hold in place while adhesive cures. (FIG 30).
- Clean up adhesive with spatula. Remove insulation/gaffa tape.
- After 24-48 hours remove stabiliser blocks (FIG 31).

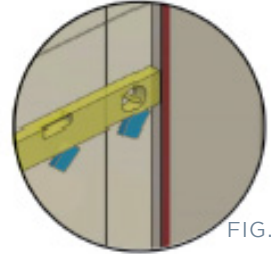


FIG.23

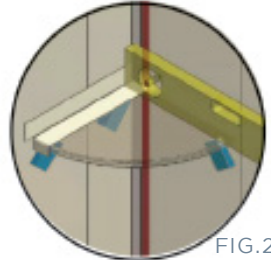


FIG.24

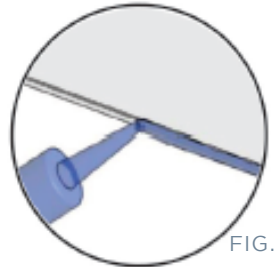


FIG.25

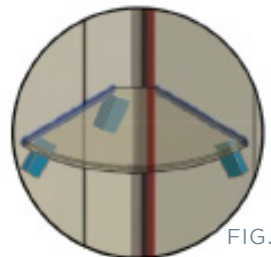


FIG.26

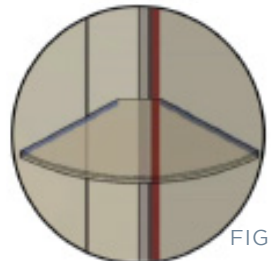


FIG.27

COMMISSIONING YOUR SHOWER

8. COMMISSIONING YOUR SHOWER

- Clean glass and ensure no silicone residue remains on glass, channel or surrounding area.

9. CARE AND MAINTENANCE

You can keep your Sereno shower looking it's very best by following a few simple guidelines:

- Clean shower twice weekly using a mild detergent in warm water and a soft lint free cloth. Ensure channels, hinges and handle are properly cleaned.
- A quick wipe down with a shower squeegee after each use will prohibit water staining the glass.
- Do not use abrasive cleaners or high strength chemicals on your shower.

INSTALLATION WARRANTY

Your approved Crest shower installer should provide you with a written 5 year minimum installation workmanship warranty. Product warranty applies regardless of who has installed the shower.

WARRANTY

Crest Shower Systems warrants that when installed as per the supplied instructions, the Shower System will be free from manufacturing defects for a period of 10 years from the date of sale. This means that apart from the typical surface splash, no water will be allowed to leak into the building structure for a minimum of 10 years.

All products supplied by Crest Shower Systems exceed the requirements of the New Zealand Building Code and all glass is manufactured to meet AS/NZS2208 1996 Grade A Safety Glass and is permanently marked as such in accordance with the code.

Crest Shower Systems will supply replacement parts or product at its discretion, free of charge where product is covered by this warranty and proof of defect has been received within 100 days of first appearance. To ensure warranty remains valid, the supplied care and maintenance instructions must be adhered to and the Crest Warranty form supplied with the product must be complete and returned at time of purchase (hard copy or Online). Warranty is non-transferable.

Crest will be liable for the replacement of products or components including their installation, or for an equivalent product including its installation, should the supplied product or component be declared defective by an authorised Crest Shower Systems representative. Beyond this, Crest will not be liable for any damages including incidental or consequential damages related to the use of this product.

Warranty does not apply to the following situations:

- Shower has been improperly installed.
- Shower has been misused or damaged.
- Shower damaged or defective prior to installation.
- Supplied instructions were not adhered to during installation.
Note: Discretion must have been used at all times by installer as each situation may vary.
- Shattering panels as due to the toughening process, cause cannot be determined.

WARNING

**THIS SHOWER HAS
JUST BEEN INSTALLED**

**PLEASE DO NOT WORK
IN OR AROUND THE
SHOWER UNTIL**

**Any queries, feel free to
ring me on**

**Best regards,
Your Shower Installer**

crest
showers